

itsf-konferansen 2024

WAKE ME UP!

IT for en bærekraftig fremtid

Clarion Hotel Oslo Airport, 7.-8. mars 2024



Situasjonsforståelse, verdistrømsanalyse og Wardley mapping

Kristian Spilhaug
Sopra Steria



Situasjons- forståelse

01



Situasjonsforståelse / Situational awareness

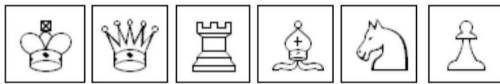
Wikipedia: The formal definition of Situational Awareness is broken down into three segments

- perception of the elements in the environment
- comprehension of the situation
- projection of future status

Metoder for å oppnå bedre situasjonsforståelse:

- OODA-loop
- DMAIC
- SWOT-analyse
- Verdistrømsanalyse
- Wardley mapping

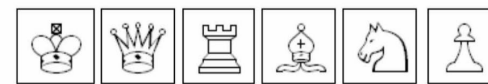
Situasjonsforståelse i sjakk



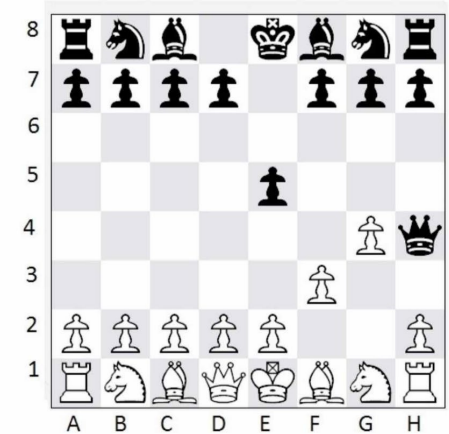
Pawn (w), Pawn (b), Pawn (w),
Queen (b)



Pawn (w), Pawn (b), Pawn (w),
Queen (b)

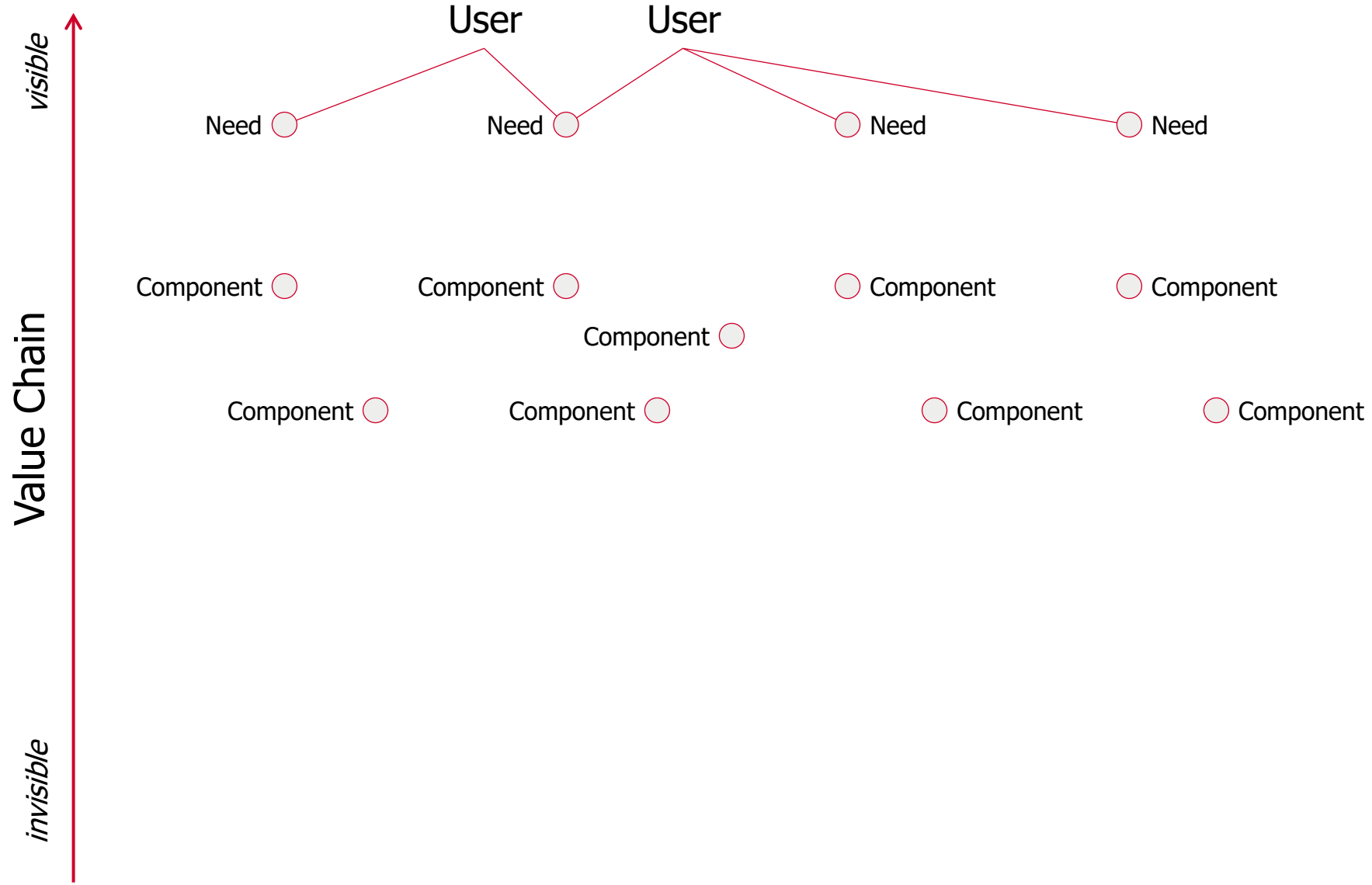


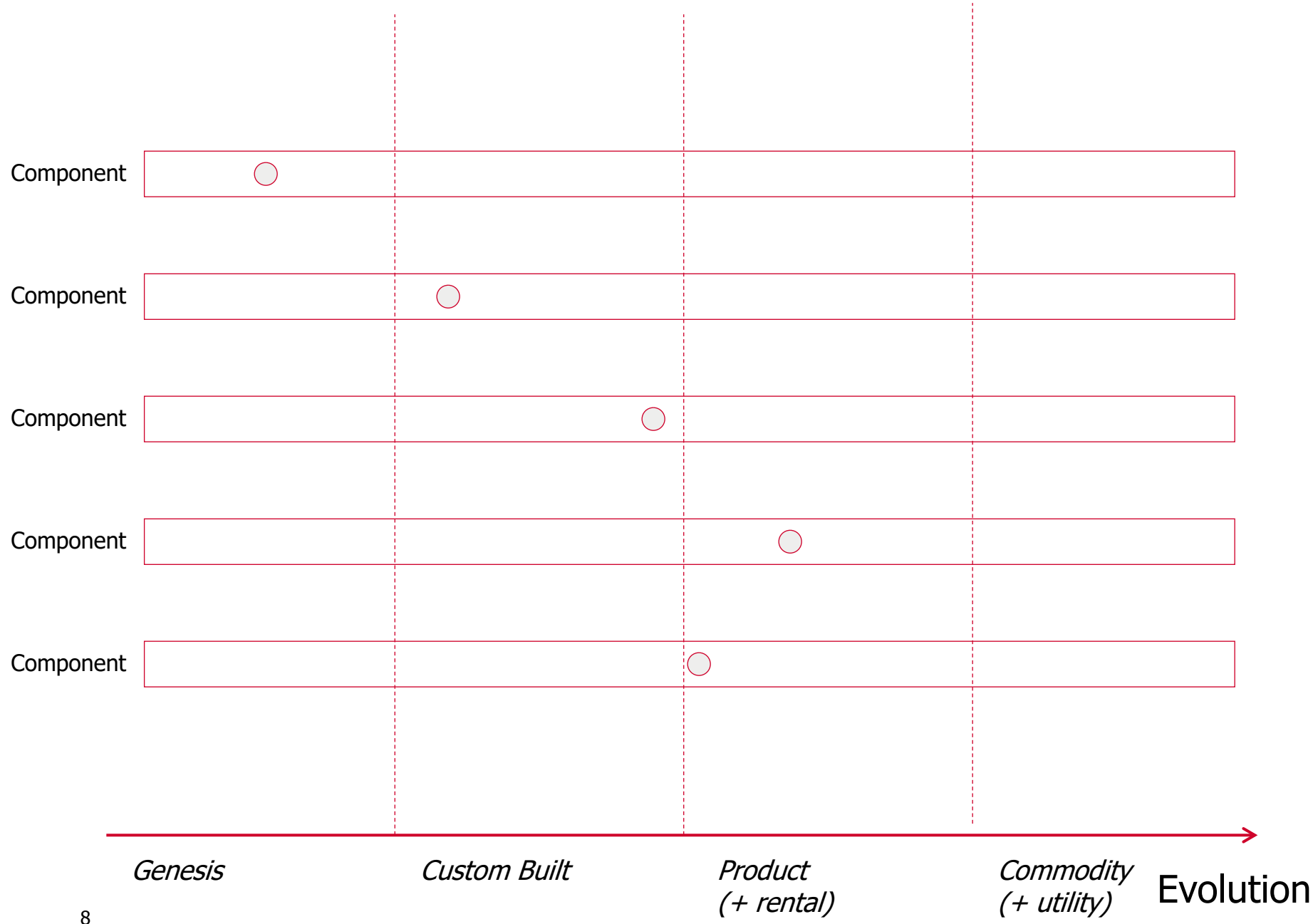
Pawn (w), Pawn (b), Pawn (w),
Queen (b) ... LOST.

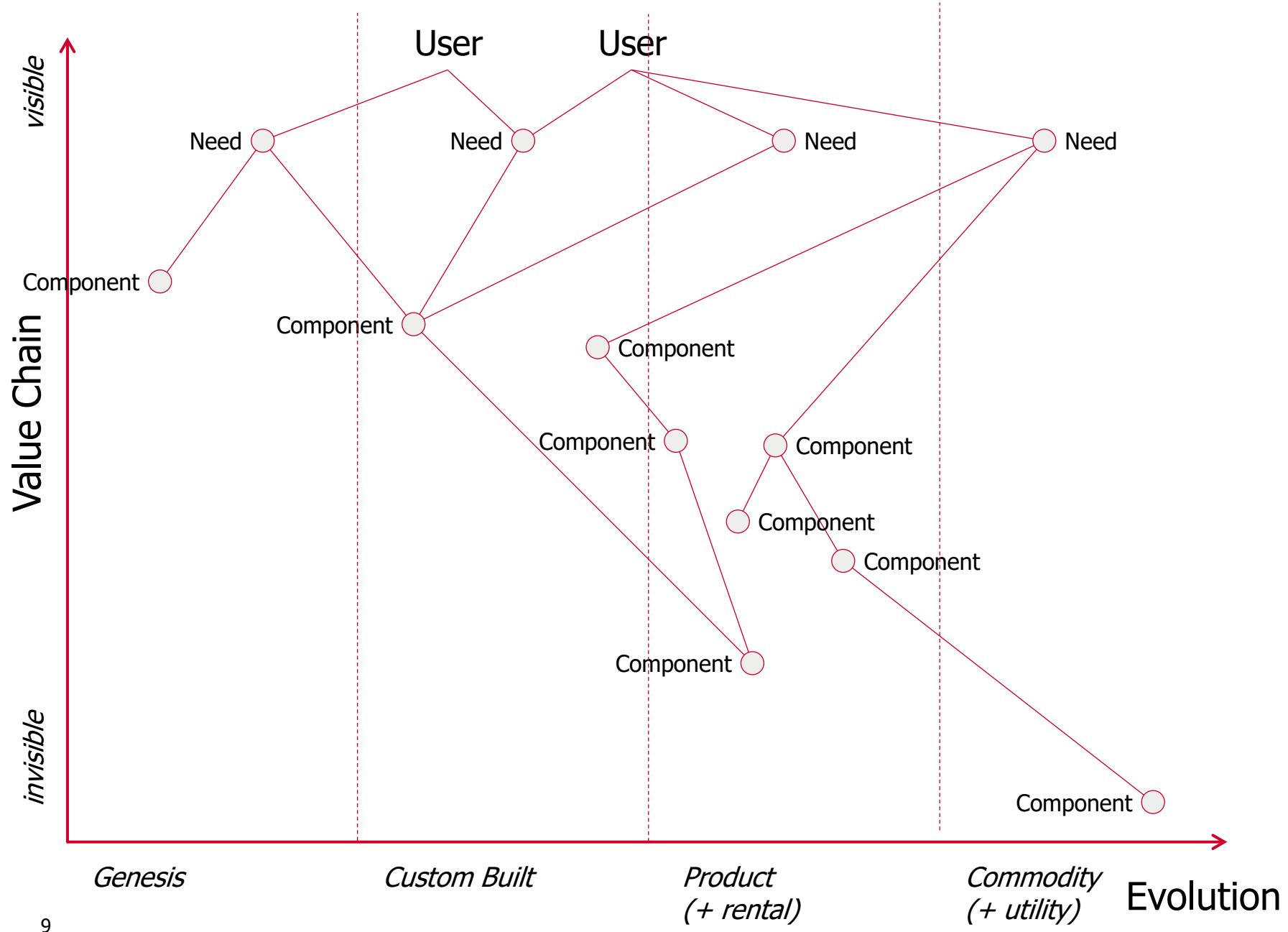


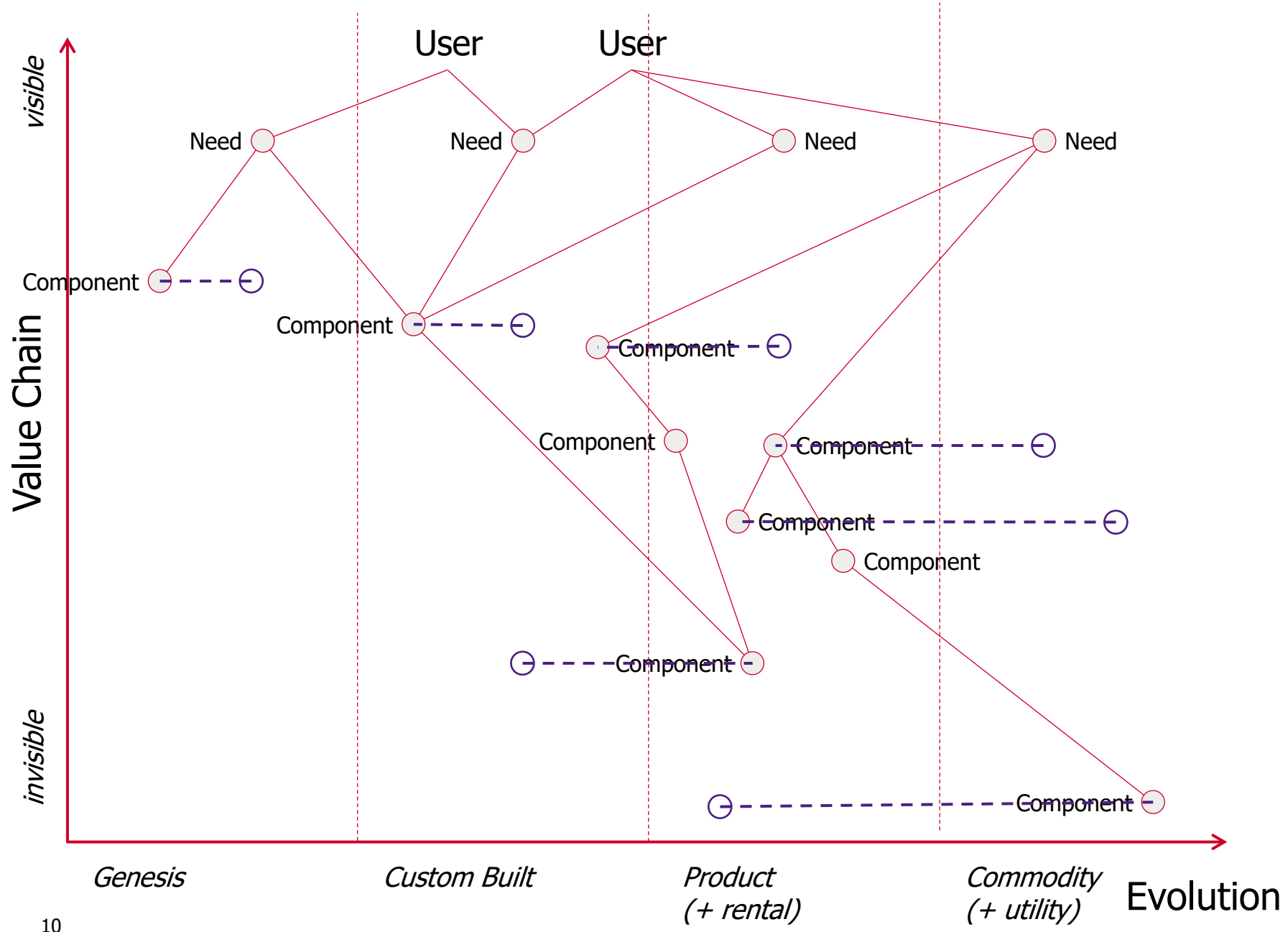
Verdistrøms- analyse og Wardley mapping

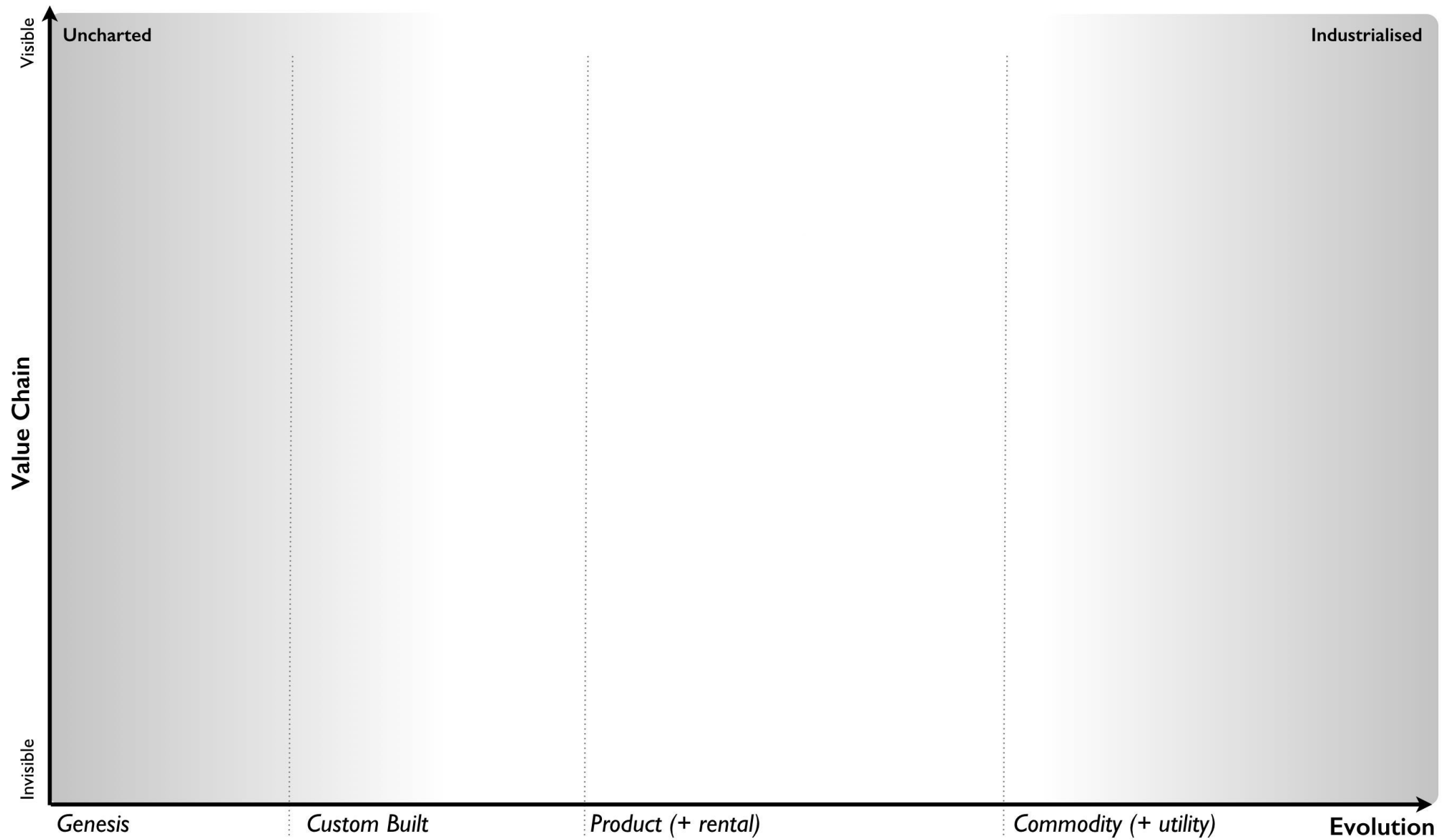












Wardley Mapping Canvas

1. Purpose

What is your purpose? Why does this organization or project exist?

2. Scope

What is it that you are mapping? What does it include? What does it *not* include?

3. Users

Who uses or interacts with the thing you are mapping?

4. User Needs

Copy your users over. What do they need from you? What is each user's journey?

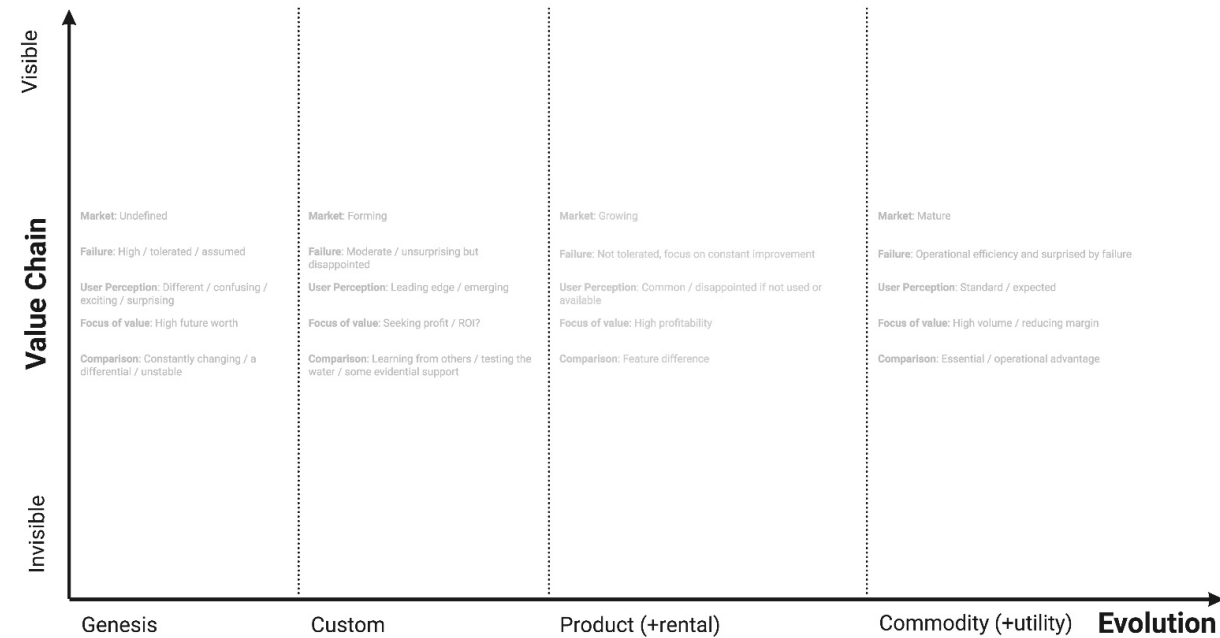
5. Value Chain

Copy the users over, with their needs underneath. What sorts of things do you need to be doing to fulfill those needs? Arrange them according to dependence – create a value chain.



6. Map

Copy the value chain over. Use the evolutionary characteristics to decide where to place each component along the horizontal axis (Evolution).



Kristian Spilhaug

kristian.spilhaug@soprasteria.com

+47 95 73 07 97

